

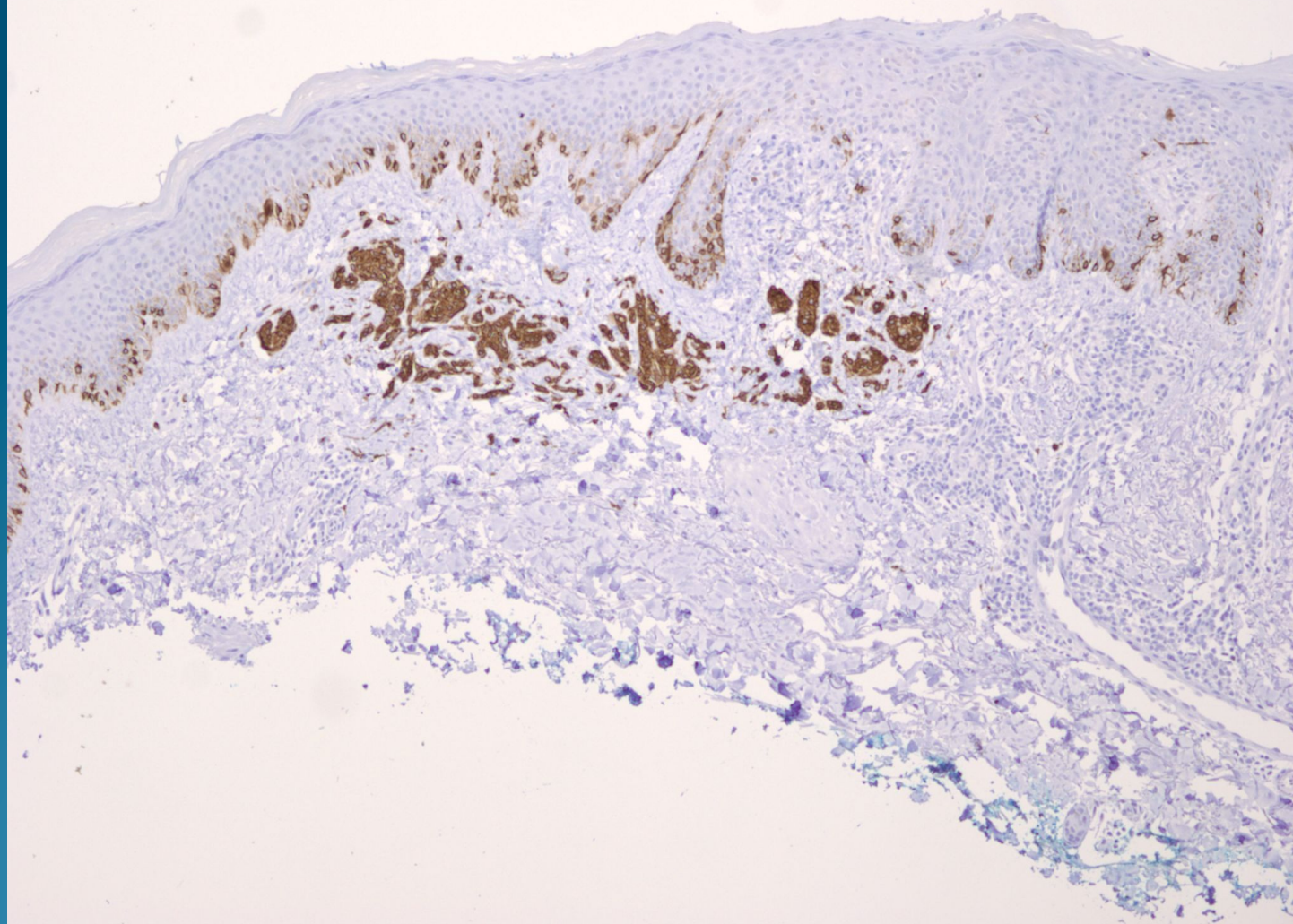
# What is the best diagnosis?

- A. Invasive malignant melanoma
- B. Extramammary Paget's disease with invasion
- C. Bowen's disease with intradermal melanocytic nevus
- D. Poroma, inflamed
- E. Sebaceous carcinoma

# Bowen's disease with Intradermal melanocytic nevus

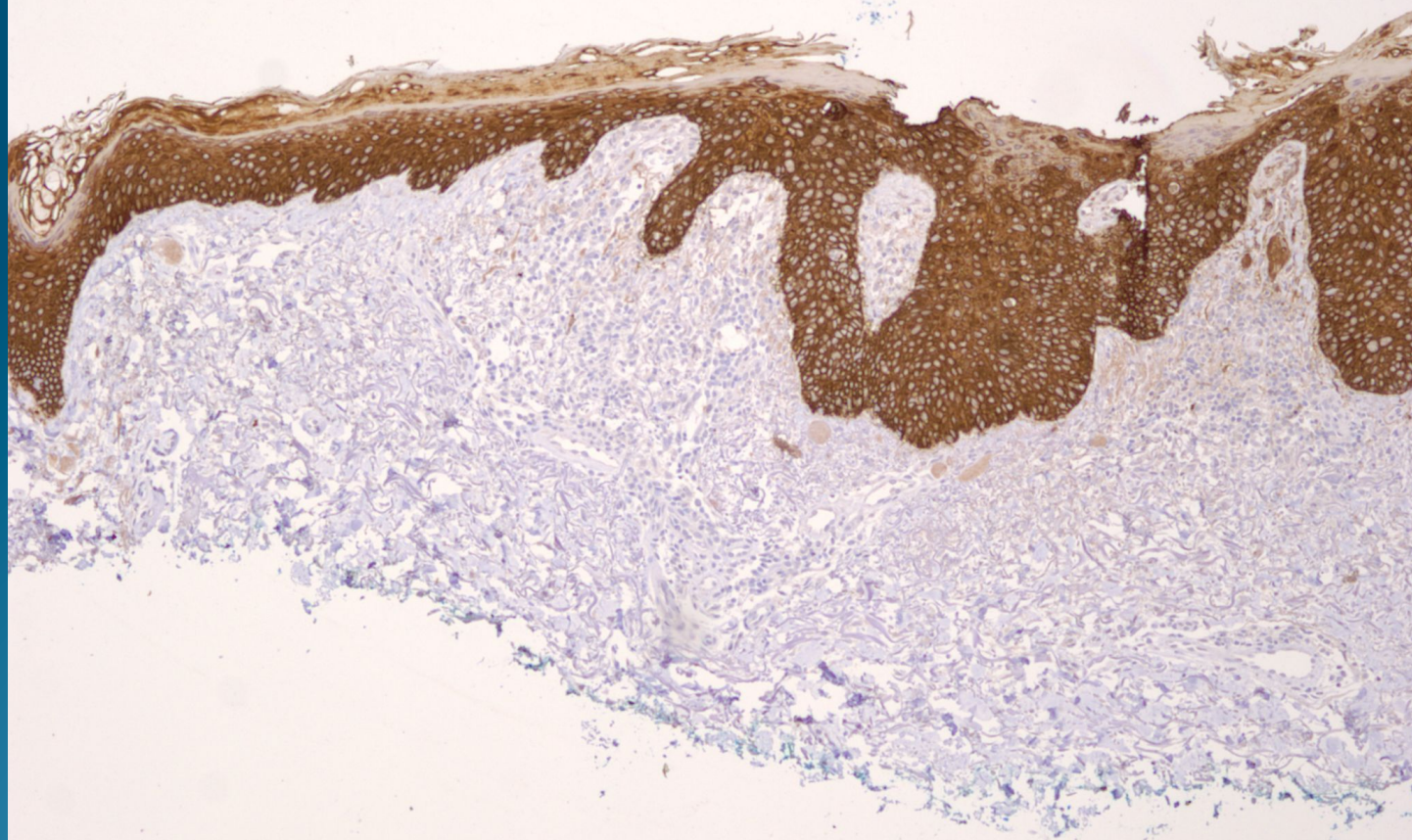


MelanA

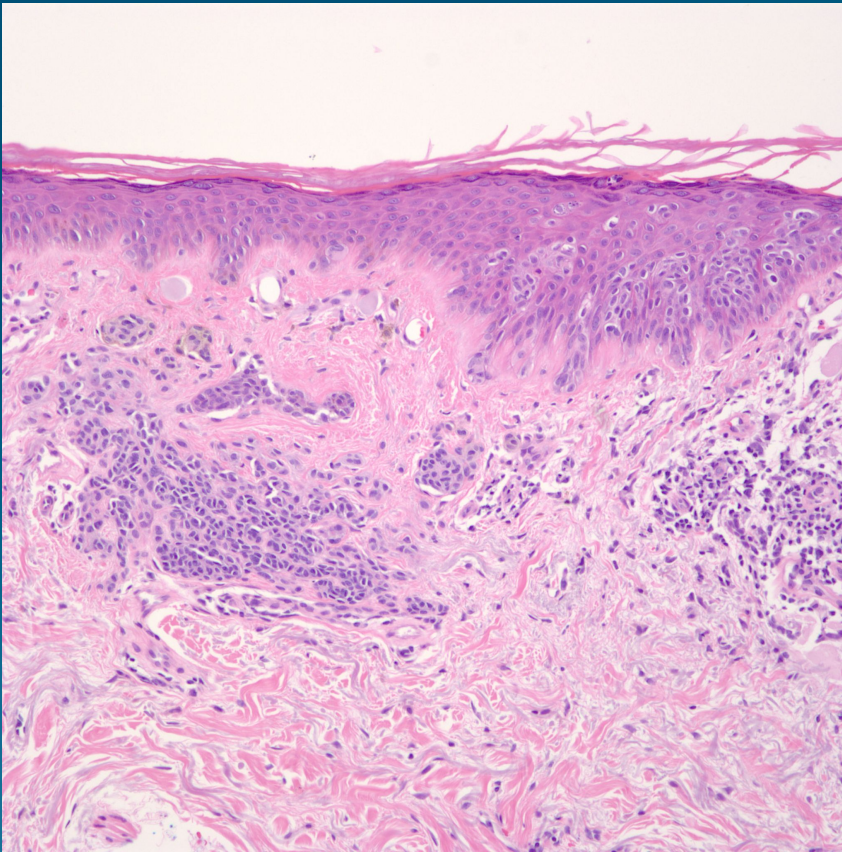




## HMW Cytokeratin



# Pearls



- Bowen's disease may simulate melanoma in situ-especially complicated if there is a concomitant melanocytic nevus
- Morphology helpful but may need additional IHC stains to confirm